

**213 West Barnes Lane
New Malden, KT3 6HZ**

£700,000 Freehold

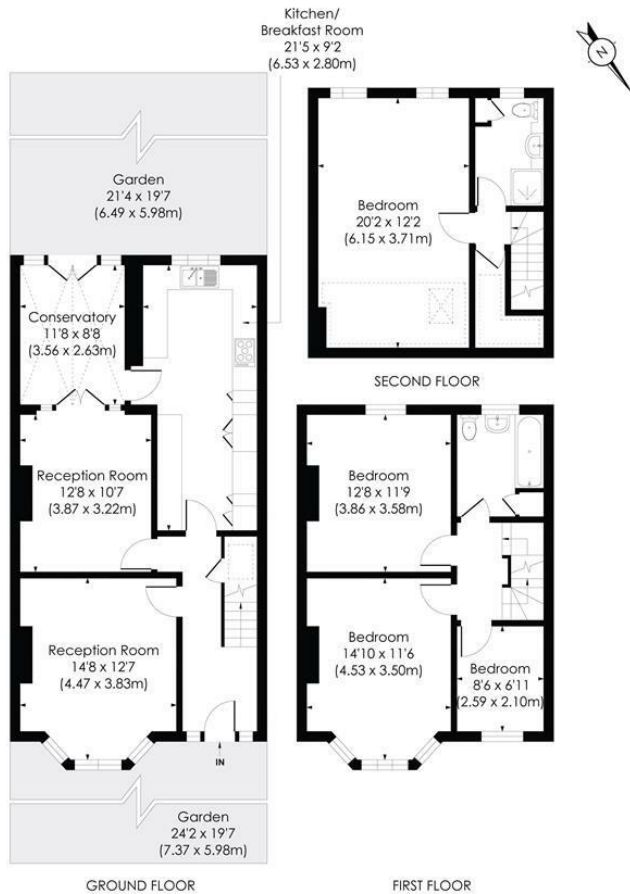


This spacious 1,593 sqft FOUR BEDROOM, TWO BATHROOM Semi Detached house is perfectly located for both Motspur Park and Raynes Park. There is a large separate front reception room, dining room, extended kitchen, conservatory, four bedrooms and two bathrooms. An excellent family home.

WEST BARNES LANE, KT3

Approx. Gross Internal Floor Area

1593 Sq. ft/147.99 Sq. m (Including reduced height)



© Pixangle Property Marketing Ltd. info@pixangle.com Tel: 0208 870 2118
 This floor plan has been prepared for the purpose of illustration only in accordance with the latest RICS code of measuring practice and is not to scale. All measurements and areas are approximate and whilst every effort has been made to ensure the accuracy of the plan contained here, no responsibility is taken for any error, omission or misstatement.

- Four Bedroom - Two Bathroom
- Semi Detached House
- Close To Motspur Park Station
- Close to Raynes Park Station
- Extended Kitchen and Conservatory
- Low Maintenance Rear Garden
- No Onward Chain
- 1,593 sqft
- EPC - D
- Council Tax Band - E

Energy Efficiency Rating		Current	Potential
Very energy efficient - lower running costs			
102 plus)	A		
81-101)	B		
69-80)	C		
55-68)	D		
39-54)	E		
21-38)	F		
1-20)	G		
Not energy efficient - higher running costs			
England & Wales		83	56
EU Directive 2002/91/EC			

For Free Mortgage Quote and Best Mortgage Rates, call Ellisons Mortgage Advisor on 0208 944 9595